

LOT 6080.1

AS160 (TBC1D4)

3028

P2

S588

APPLICATIONS	SPECIES CROSS REACTIVITY	MOLECULAR WEIGHT
Western blot	Human, Mouse	160 kDa

#### BACKGROUND

AS160 (Akt substrate of 160 kDa), a Rab GTPase-activating protein, is an Akt substrate implicated in the regulation of GLUT4 translocation.

#### NCBI PROTEIN ACCESSION NUMBER

O60343

#### IMMUNOGEN

A synthetic peptide (below) was coupled to KLH.  
CRGRLG(pS)VDSFE

#### SOURCE AND PURIFICATION

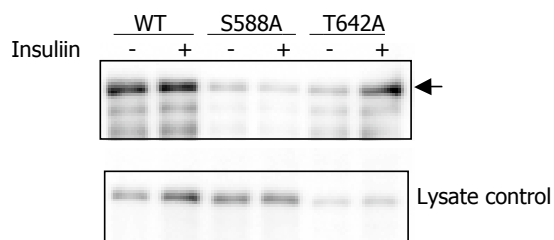
Affinity purified sheep polyclonal antibody

#### PROTOCOL

For Western blot analysis, block membrane with 5 % w/v milk, 1x TBS and 0.1% Tween-20 (TBST) for 30 min at room temperature and incubate with diluted antibody (in 1 % w/v BSA, TBST) at 4 °C overnight with gentle rocking.

#### REFERENCE

Hoy, A.J. et al. (2007) Am J Physiol Endocrinol Metab. 2007 Nov;293(5):E1358-64.



Western blot analysis of immunoprecipitated Flag-tagged AS160 wild type (WT), S588A mutant (S588A), and T642A mutant (T642A) over-expressed transiently in HEK293 cells, basal (-) or with (+) 1  $\mu$ M insulin treatment for 15 minutes.

#### STORAGE AND USE

100  $\mu$ g supplied as lyophilised protein in 10 mM sodium HEPES (pH 7.5), 150 mM NaCl, and 0.05 % sodium azide. Store at 4 °C . Reconstitute in 100  $\mu$ l of sterile water. This product is for in vitro use only.

#### RECOMMENDED ANTIBODY DILUTIONS

Western blotting 2  $\mu$ g/ml